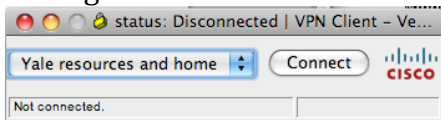


# Printing Installation

## Vista XP

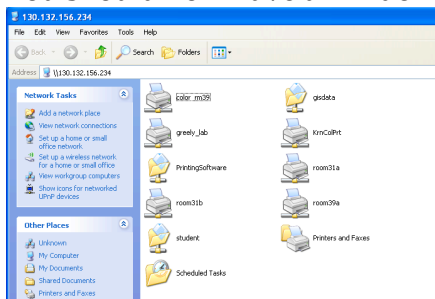
1. Goto “Control Panels” – “User Accounts”
2. This should open up the “User Accounts” window, click on “Turn User Account Control on or Off.” Click on “Continue”
3. Uncheck “Use User Account Control (UAC) to help protect your computer” and click “OK”
4. Click on “Restart Now” – after finishing the installation, you can turn User Account Control back on, but it needs to be off during the installation of the software and printers.
5. If you are not on campus, please initiate the Cisco VPN connection and make sure to change the setting to “Yale Resources and Home Networks” before connecting.



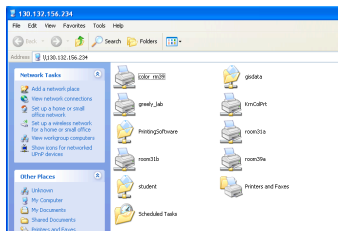
If

you are on campus, you may skip this step.

6. From “Start” goto “Run” and type in [\\130.132.156.234](http://130.132.156.234) and press enter.
7. When prompted for your username and password enter it as:
  - a. Username = “yale\netid”
  - b. Password = Your NetID password
8. You should now have a window on your desktop that looks similar to the picture below.



9. Double click on “Printing Software.”
10. Double click on “AuthenticationModuleWinOS.”
11. Double click on “Client7.0.130.36\_EnCBM.msi”
12. When prompted by the “Open File – Security Warning” hit “RUN.”
13. This will launch the installer for the Authentication Module.
14. Hit “Next” then “Install” then “Finish.”
15. When prompted with a “Windows Security Alert” hit “Unblock.”
16. Go back to “Start” then “Run” and type in [\\130.132.156.234](http://130.132.156.234) and press enter. If prompted for a username and password:
  - a. Username = “yale\netid”
  - b. Password = Your NetID password
17. You should see a window that looks similar to the picture below.



18. Find the printer that you would like to use.
19. Double click on that printer to install the drivers.
20. Repeat steps 14-15 for any other printers that you would like to use.