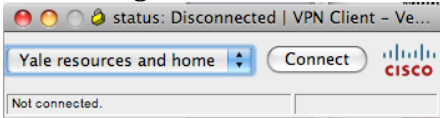


## Printing Installation

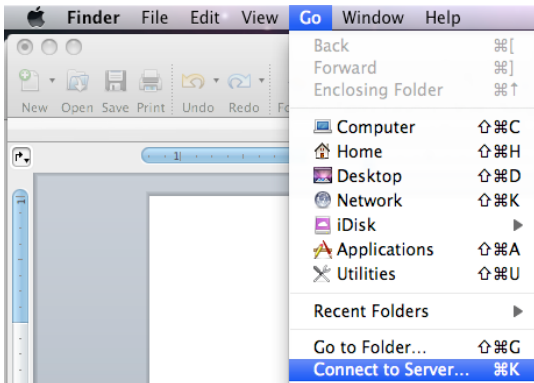
### Macintosh OSX 10.6 Wireless

1. If you are not on campus, please initiate the Cisco VPN connection and make sure to change the setting to “Yale Resources and Home Networks” before connecting.

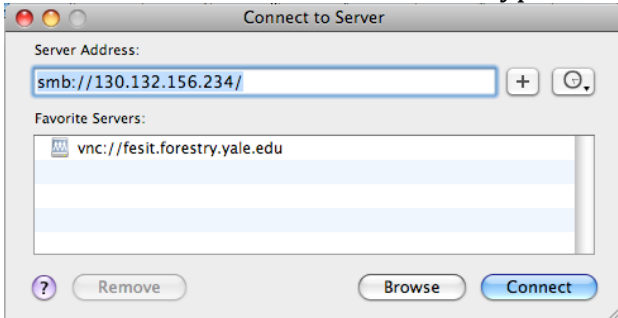


If you are on campus, you may skip this step.

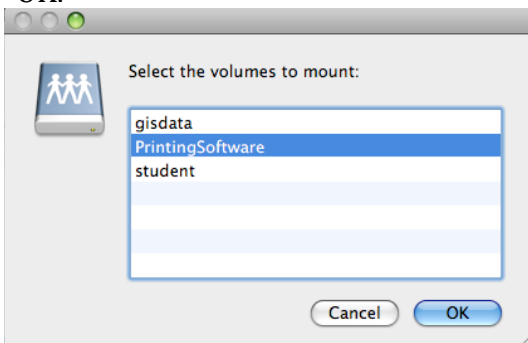
2. Connect to the student server, tyr, by going from the Finder to “Go” then “Connect to Server”.



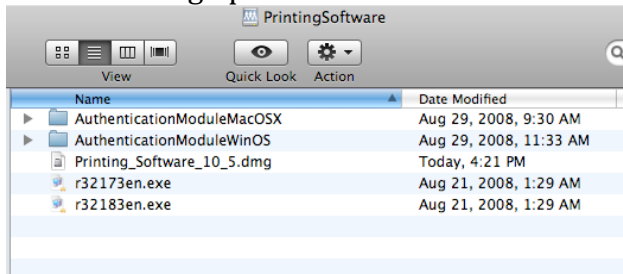
3. In the “Connect to Server” window type in: “smb://130.132.156.234” and hit “Connect.”



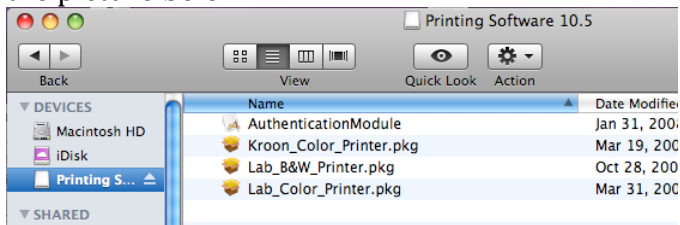
4. When prompted for a username and password, enter your username as “yale\netid” and use your netid password for the password.
5. When prompted to select a volume, choose the “PrintingSoftware” volume and click on “OK.”



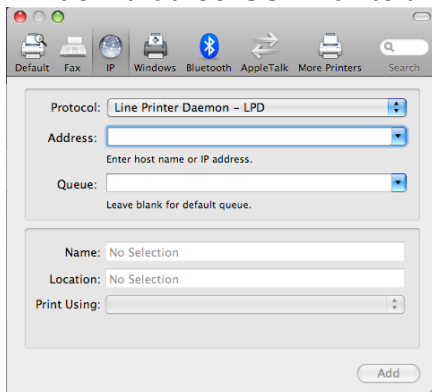
6. This will bring up a window that looks something like the one below.



7. Drag the icon labeled “Printing\_Software\_10\_5.dmg” to your desktop.  
8. Once it has finished copying to your desktop, double click on the icon on your desktop to mount the disk image.  
9. Open the volume called “Printing Software 10.5” and you should see something similar to the picture below.



10. Click and hold on the icon called “AuthenticationModule.” Drag and copy it to your Application Folder located on your hard drive.  
11. Double click on the appropriate printer to launch the printer driver installation of the printer that you would like to print to. Click through the installer prompts until the installation is complete  
12. Repeat the above step to install any additional print drivers.  
13. Once you have copied the AuthenticationModule to your application folder and installed the print drivers, open up the “System Preferences” and click on the “Print & Fax” icon.  
14. Hit the plus button in the bottom left of the window to add a printer. This will open up a window that looks similar to the picture below.



15. Click on the “IP” icon at the top of the window.  
16. In the “Protocol” field, select “Line Printer Daemon – LPD”  
17. In the “Address” field, type in “130.132.156.234”  
18. In the “Queue” field, type in:  
a. “RM38BW1” to print to the Room 38 b&w printer #1 in Sage-Bowers Hall.  
b. “RM38BW2” to print to the Room 38 b&w printer #2 in Sage-Bowers Hall.  
c. “RM38BW3” to print to the Room 38 b&w printer #3 in Sage-Bowers Hall.  
d. “FESColor” to print to the Color Printer in Room 38 in Sage-Bowers Hall.  
e. “KrnColPrt” to print to the Kroon Hall Ground Floor Color Printer.  
f. “GREELY\_LAB” to print to the Greely Lab printer.  
19. In the “Name” field, type in a descriptive name for the printer.

20. In the "Location" field, feel free to leave it blank.
21. In the "Print Using" field, change "Generic Postscript Printer" to "Select a Driver to Use"
  - a. For the "RM38BW1", "RM38BW1", and "RM38BW1" printer use the "RICOH Aficio AP4510 PS" driver.
  - b. For the FES Color Printer in Room 38 use the "RICOH Aficio CL7200PS" driver.
  - c. For the Kroon Color Printer use the "Ricoh Aficio SP C811DN PS" driver.
  - d. For the Greely Lab printer use the "Ricoh Aficio AP 600N" driver.
22. If prompted for Options,
  - a. "RM38BW1", "RM38BW1", and "RM38BW1" printers have Tray 3 and 4 installed.
  - b. Kroon Color Printer has Twin Trays installed
  - c. FESColor Printer has Trays 3 and 4 installed and a duplex unit installed.
23. Click on "Add" to finish adding the printer.
24. Repeat steps 14 – 22 to add any additional printers.
25. From "System Preferences" click on "Accounts".
26. Choose your account and click on "Login Items" at the top.
27. Click on the "+" symbol to add an item.
28. Goto the "Applications" folder and select "AuthenticationModule" and click "Add".
29. Close out of "System Preferences" and restart your machine.
30. After restarting your machine, run "Software Update" from the Apple Menu to update the Ricoh Printer Drivers.
31. When you want to print to any of the installed printers, just choose them from the print dialog box.
32. **For the Color Printer in Kroon Hall, if you are printing in black and white, be sure to change the setting in "Printer Features" to Black and White, otherwise you will get charged for a color print.**