


Yale SCHOOL OF FORESTRY & ENVIRONMENTAL STUDIES


IMPACTS

2018 ANNUAL REPORT





Knowledge
and leadership
for a sustainable
future.



Since its founding in 1900, the Yale School of Forestry & Environmental Studies has been at the forefront of bringing cutting-edge science to the management of natural resources and the environment. For more than a century the School has aimed to meet both urgent and long-term needs through innovative research and the training of new leaders. Today we continue to build on this legacy by providing world-renowned research, teaching, and public engagement in the face of increasingly complex environmental challenges.

In 2017, we unveiled an ambitious new Strategic Plan that brought renewed energy to our core mission and gave shape to our aspirations for continued evolution and growth.

In this report, we outline our most important priorities and share stories that illustrate the many ways that we are having a profound impact on the world. We do this through our world-class faculty, who are inspiring the next generation of leaders through their scholarship and teaching. We do this through our students, who are applying their intellect, passion, and creativity to tackle urgent environmental problems in every corner of the planet. We do this through our amazing alumni network – 5,000 and growing – which is providing leadership in nearly every sector worldwide. And we do this through our centers and programs, which serve as important hubs of research, student learning, and outreach to alumni and the wider professional world.

Our mission, simply stated, is to provide knowledge and leadership for a sustainable future. We thank you for your continued commitment to our School and for the many ways in which you help us achieve that mission.



Indy Burke, Carl W. Knobloch, Jr. Dean



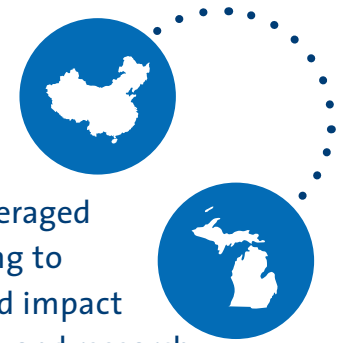
Satellite image of Kathmandu, Nepal (pictured in light blue), courtesy of Professor Karen Seto and Meredith Reba '14 M.E.S.c.

Remote Sensing and Disaster Response

After an earthquake devastated Nepal, triggering thousands of landslides that buried whole villages in mud and rock, **Karen Seto**, the Frederick C. Hixon Professor of Geography & Urbanization Science, launched a research project that uses satellite imagery to study the links between urban growth, natural disasters, and a growing vulnerability for mountainous communities. A new collaboration between Seto and **Eli Fenichel**, Associate Professor of Bioeconomics & Ecosystem Management, will build on that research, examining how remote sensing can assist in the response to disasters in the Himalayan region — and across the world. “If decision-makers had the information from Karen’s research at their fingertips after the earthquakes hit, what could have been done differently?” Fenichel asks.

Carbon Charge: Taking Climate Fight to Campus

In 2014, during an Earth Day panel organized by **Daniel Esty**, the Hillhouse Professor of Environmental Law and Policy, an F&ES student asked how Yale might reduce its own greenhouse gas emissions. **William Nordhaus**, the 2018 Nobel Prize-winning Sterling Professor of Economics and a member of the panel, suggested, “Yale could implement an internal carbon tax.” The idea quickly gained traction. Within a year the university launched a program that would become the Yale Carbon Charge Project, an internal carbon-pricing initiative that incentivizes lower energy consumption in 250 buildings across Yale. The results are promising; an analysis of the initiative — by F&ES researchers, including Esty and Professor **Kenneth Gillingham** — found that putting a value on carbon can reduce energy use.



Students have leveraged classroom teaching to achieve real-world impact through field work and research projects to address complex environmental challenges, from lead-contaminated water in Flint, Michigan, to endangered species conservation in China.

Examining Environmental Health Disparities

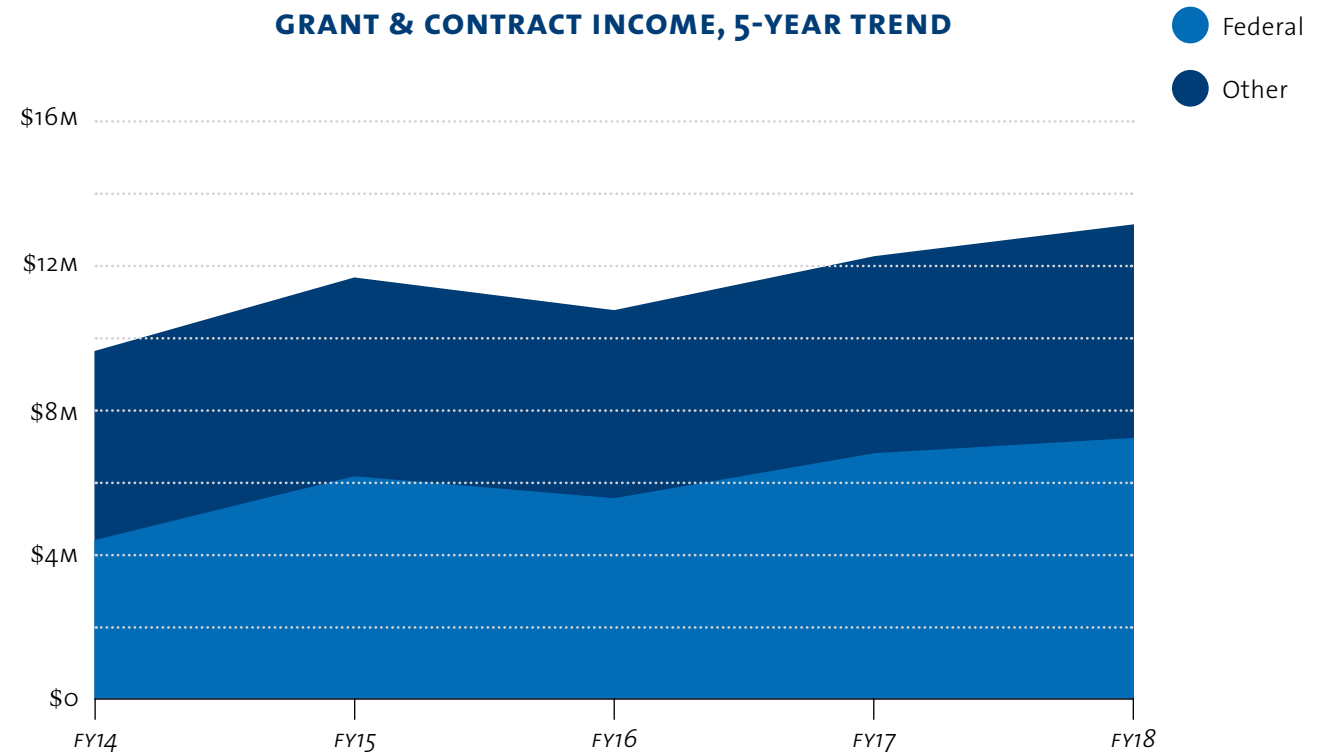
The health threats associated with environmental pollution, including air pollution, are often felt most acutely in low-income communities. **Michelle Bell**, the Mary E. Pinchot Professor of Environmental Health, is studying these disparities. In a long-term study funded by the National Institutes of Health, she and a team of colleagues are examining how environmental and socioeconomic status are related — particularly in the senior population, which is already vulnerable to health risks. By identifying the most common contributors to these environmental health disparities, Bell hopes to identify potential opportunities for intervention and improved health policy.

Opening the Door for Students

When **Grethel Aguilar** was named 2018 Dorothy S. McCluskey Visiting Fellow in Conservation at F&ES last year, she expected to spend her time at Yale working on a book. Instead she spent much of the spring working with students on a variety of projects — and she could not have been happier about it. Aguilar, who visited F&ES from the International Union for the Conservation of Nature (IUCN), helped the students organize major conferences — including the Sustainable Development in Latin America and the Caribbean Conference — and forge connections that will strengthen their own professional opportunities.



GRANT & CONTRACT INCOME, 5-YEAR TREND



STUDENT IMPACTS

Better Ecology Through Fluorescence

Frustrated by the lack of tools to track the development and movements of individual frogs in the wild – and thus better understand amphibian ecology – Ph.D. candidate **A. Andis** came up with his own. He found a way to make them glow. After dipping wood frog tadpoles in a safe liquid calcein solution, he found that marked animals glowed green, through each of their stages of development, when lit by a fluorescence flashlight.



Glowing wood frogs help A. Andis track the animal's development and movement.

Tracking an Endangered Heron

Indra Acharja '19 M.F.S. has dedicated his career to conserving threatened wildlife species in the Himalaya, so he knows a lot about the critically endangered white-bellied heron. With the communication and professional skills he is acquiring at F&ES, the rest of the world soon will, too. Acharja is bringing his research to the public and private sector to develop a community-led conservation approach to save the bird from extinction.

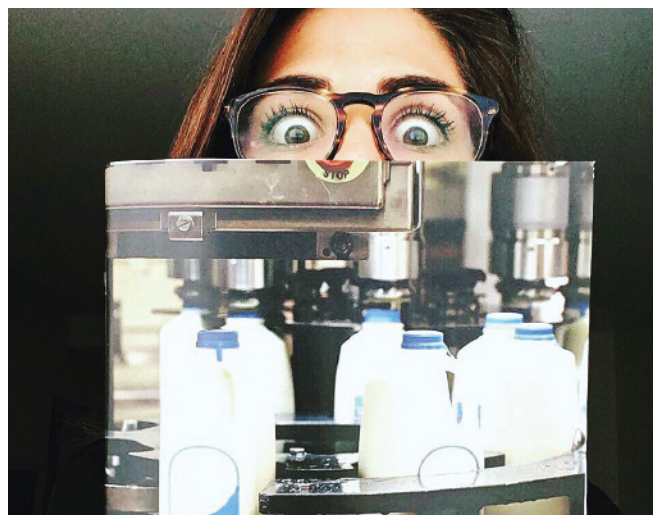


Indra Acharja on the lookout for white-bellied herons in Bhutan.

A Cleaner Standard for Dairy Production

Working for the U.S. Department of Agriculture this summer, **Abby Snyder** '19 M.E.M. wrote a Greenhouse Gas Inventory Guidance report that will help dairy producers achieve more sustainable practices.

Abby Snyder displays her report, which was approved by the USDA.



Improving Access to Science in Indonesia

Working in East Kalimantan, Indonesia, where 6.6 million hectares have been allocated for coal mining, **David Woodbury** '19 M.F.S. examined the benefits of re-vegetation on the province's badly degraded landscapes. But perhaps his greatest impact was training local leaders on an open-source statistical program that will improve their access to academic research on this critical topic – and their ability to share their own findings.



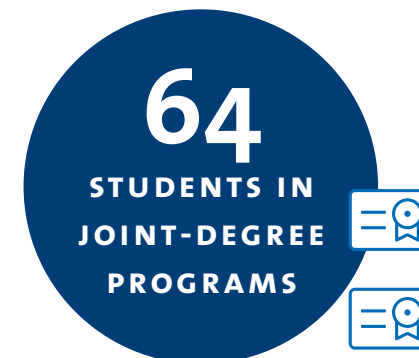
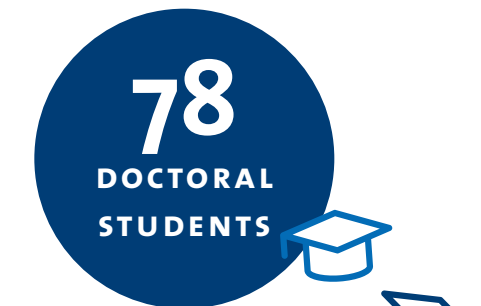
David Woodbury (left) works with local researchers in Indonesia.



51 students and postdoctoral fellows presented original research during F&ES Research Day.



MASTER'S STUDENTS COMPLETED INTERNSHIPS AND FIELDWORK IN 34 COUNTRIES THIS SUMMER. THE MOST POPULAR CITY DESTINATION WAS WASHINGTON, D.C., WITH 21 STUDENTS



7 recent graduates of Yale College enrolled in the F&ES five-year program (bachelor's and master's degrees).

A Sustainable Sendoff for iPhones

When a cracked screen or a spent battery becomes too much to bear, it's important to dispose of your cell phone properly. Thanks to **Charissa Rujanavech '13** M.E.M., iPhone users have an easy and sustainable way to recycle their old devices. Rujanavech, who works for Apple, invented Liam, a robot that disassembles iPhones to recover the valuable materials inside for recycling or proper disposal. Liam has now been upgraded to Daisy, which is capable of taking apart nine different versions of the iPhone at up to 200 times an hour.

Texas-sized Conservation

With more than 268,000 square miles of land, Texas is larger than many countries. Overseeing the conservation of its wildlife and their habitats is a challenge; it is one **Carter Smith '97** M.F.S. relishes. The Texas native has served as executive director of the Texas Parks and Wildlife Department for the past decade, during which he has focused on private land stewardship, coastal issues related to the Deepwater Horizon oil spill, and outreach to children and the state's urban populace. Earlier this year, Smith hosted Dean Indy Burke and F&ES alumni at Pedernales Falls State Park in Texas for Yale Day of Service, where they worked to improve a wildlife habitat.

Carter Smith, executive director of the Texas Parks and Wildlife Department, oversees an agency of more than 3,000 professionals.



Keeping Tourists from Loving Iceland to Death

Thanks to its stunning natural beauty, Iceland has become one of the world's most popular travel destinations. The problem now is preserving the tiny island's fragile and vulnerable ecosystem by improving the infrastructure at popular tourist destinations. **Guðmundur Ingi Guðbrandsson '06** M.E.M., Iceland's Minister for the Environment and Natural Resources, is combining his private sector and nonprofit experience with his political cachet to find sustainable solutions and educate the public about this growing problem.

Path to Leadership

When he arrived at F&ES in 2005, **Terry Baker '07** M.F. already had a taste of life with the U.S. Forest Service; he came to Yale to learn about leadership. In 2018, after several years climbing the ranks of the Forest Service, he was appointed chief executive officer of the Society of American Foresters. Baker, who views forestry as the centerpiece to effective land management in the U.S., most recently served as deputy forest supervisor of the Arapaho and Roosevelt National Forests and Pawnee National Grassland in Fort Collins, Colorado.

Terry Baker was recently named chief executive officer of the Society of American Foresters.

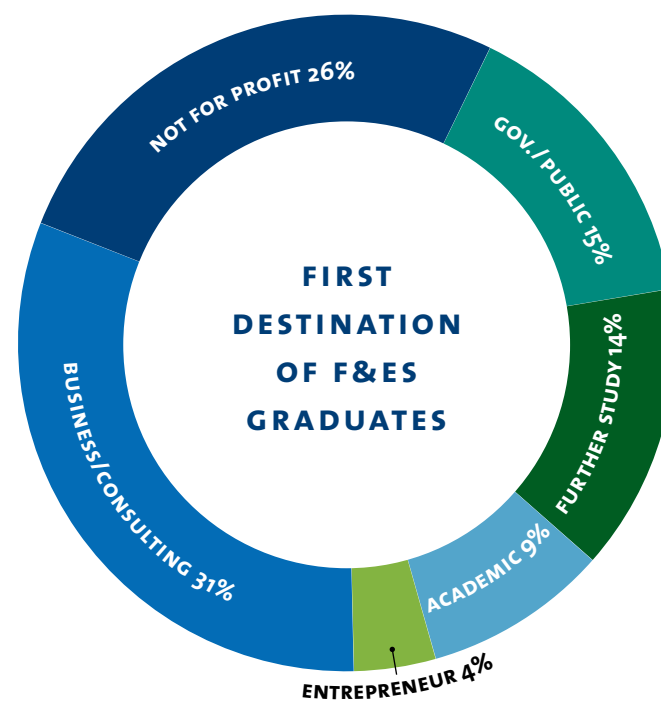


Better Resource Use, Better Living Conditions

Dora Cudjoe '05 M.E.M. shows that improving the environment doesn't always require getting your boots dirty. As senior environmental specialist at the World Bank, the native of Ghana assists developing nations by identifying tools and resources needed to optimize their natural resources to reduce poverty and improve living conditions. Cudjoe also stresses the importance of sustainability while teaching these practices, creating a stable economic environment that also addresses climate challenges.



Dora Cudjoe works with developing nations on optimizing natural resources in a way that is sustainable and eco-friendly.





Sam Teicher (left) and Gator Halpern launched the world's first land-based commercial coral farm.

Fighting for the World's Struggling Reefs

More than 30 percent of the world's coral reefs have died since the 1970s, and by midcentury another 45 percent might be gone. Coral Vita, a company launched by two recent F&ES graduates, **Gator Halpern** '15 M.E.M. and **Sam Teicher** '15 M.E.M., is working to reverse this decline. This year they will launch the first land-based commercial coral farm to grow species resilient to changing ocean conditions. Their vision is one of many innovative ideas supported by the **Yale Center for Business and the Environment**. By providing support to student entrepreneurs, from inception and planning through pitching and seed funding, the center provides a powerful lever for affecting change.

Promoting Tools for Informed Forest Stewardship

About one-third of all forestland in the U.S. is owned by private individuals or families. But most of these owners don't manage their forest and don't receive advice or guidance from resource professionals. Since 2003, the Yale-based **Sustaining Family Forests Initiative** has trained more than 1,200 natural resources professionals from 400 organizations — at 44 workshops in 31 states — to better communicate with these landowners about their stewardship choices.

Leadership for a Healthier New Haven

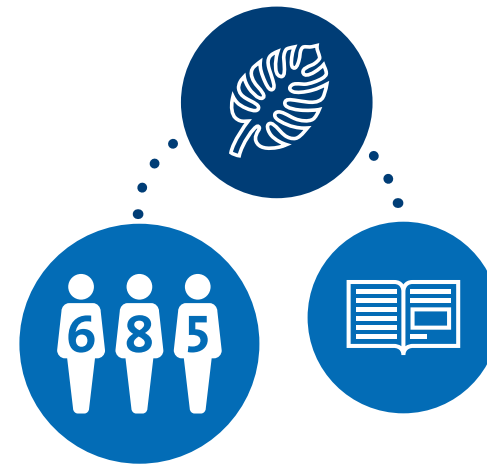
Every year, about 257 million gallons of polluted stormwater flow into New Haven's surface waterways when heavy rains overwhelm the city's sewer system. To help curb the environmental threat, the F&ES-based **Urban Resources Initiative** has helped build nearly 100 "bioswales" across the city. These bioswales — landscaped areas that capture and infiltrate 56% of stormwater runoff before it reaches the sewers — make Yale's home city more resilient and serve as an example of urban leadership.



The Urban Resources Initiative built nearly 100 bioswales across New Haven to manage stormwater.

Green Solutions for the Developing World

The **Center for Green Chemistry and Green Engineering** at Yale is working with the United Nations Industrial Development Organization (UNIDO) to promote and implement the design of cleaner chemical products and processes in the developing world. Drawing on research led by experts at the Yale center and other international partners, the collaboration is developing curricula and training on "green chemistry" practices — including training initiatives in Brazil, Serbia, Colombia, Sri Lanka, Egypt, and South Africa.



Since 1984, the Tropical Resources Institute has supported 685 student fellows to conduct projects in the tropics and publish their work in academic journals.

**IN 10 YEARS
THE ENVIRONMENTAL
LEADERSHIP & TRAINING
INITIATIVE HAS
IMPLEMENTED 150 COURSES
REACHING 6,645
LEADERS IN MORE THAN
75 COUNTRIES**

In 2018, the Yale Center for Environmental Law & Policy released its 11th Environmental Performance Index, ranking 180 countries on 24 environmental public health and ecosystem vitality goals.

**YALE ENVIRONMENT 360,
AN AWARD-WINNING
ONLINE MAGAZINE
PUBLISHED AT F&ES, WAS
READ IN 238 COUNTRIES
AND TERRITORIES
LAST YEAR**

F&ES Strategic Plan Progress Report

In May 2017, the Yale School of Forestry & Environmental Studies released its first Strategic Plan in more than 10 years. The Strategic Plan outlines priorities for pursuing our vision: *Knowledge and Leadership for a Sustainable Future*.

We seek to realize two overarching outcomes:

- Broaden and deepen the School’s impact on a sustainable future through scholarship, practice, training, and engagement
- Strengthen the School’s community of faculty, staff, and students

GOAL 1: Build and maintain our leadership in areas of historic strength and international recognition through faculty, doctoral, and professional master’s programs

- ✓ Revised professional master’s curriculum in a way that leverages our existing strengths to more effectively prepare students for the environmental challenges of the 21st century
- ✓ Invested in major facilities improvements at Yale-Myers Forest, including a rebuilt forest camp to replace the camp devastated by fire in 2016 and a new research facility
- ✓ Hired ladder-track faculty in the area of energy systems analysis



In 2019, Narasimha Rao, who studies the complexity of energy systems and how they affect society, will join F&ES as an assistant professor of energy systems analysis.

A new research laboratory at Yale-Myers Forest houses a wet laboratory, a herpetarium, soils lab, and a common meeting space.



GOAL 2: Develop curricula that track our current and evolving strengths

- ✓ Introduced new curriculum for the Master of Environmental Management (M.E.M.) degree program, which requires students to select one of eight specializations
- ✓ Unveiled “learning communities” around the M.E.M. specializations and the Master of Forestry (M.F.) program that extend education and training beyond the classroom and illustrate potential career paths
- Re-evaluate content and structure of the Master of Environmental Science (M.E.S.c) and the Master of Forest Science (M.F.S.) curricula

GOAL 3: Develop initiatives to deepen our scholarly expertise and support new curricular and outreach impacts

- ✓ Organized and co-hosted campus-wide “Yale Climate Day” in May 2018
- ✓ Developed a new Environmental Data Science Hub, an online platform for resources and inspiration toward building environmental data science skills
- ✓ Started adding new courses in climate science and policy, urbanization research methods, environmental health and justice, and environmental communication
- Create new initiatives that address areas of increasing global urgency (climate change and energy, environmental health and justice, interdisciplinary urban approaches, and environmental data science)
- Develop, with Yale partners, cross-campus urbanization curriculum that promotes engagement, scholarship, and teaching
- Plan “Urban@Yale” research day



A new curriculum for the Master of Environmental Management degree, introduced for the 2018–19 academic year, places more emphasis on subject specialization while also building common foundational skills for all students.

- ✓ Completed
- In-progress



Thomas Easley, the School's first Assistant Dean of Community and Inclusion, works with students, faculty, and staff on a range of diversity, equity, and inclusion initiatives.

GOAL 4: Diversify our faculty, student body, and staff to best address the complex environmental issues of the future

- Created and staffed the F&ES Office of Community and Inclusion
- Initiated "target of opportunity" faculty search to identify diverse candidates
- Continue to prioritize strategic recruitment and scholarship support to strengthen diversity at F&ES and across the greater environmental community
- Foster national network of diverse environmental leaders, including F&ES alumni

GOAL 5: Expand the environmental communications capabilities of our students, faculty, and critical stakeholders

- Launched the Yale Environmental Dialogue, a series that convenes leading thinkers and decision-makers with the goal of producing solutions to sustainability related issues
- Develop new Center for Environmental Communication that will support new research, develop evidence-based communications strategies, teach students and professionals in theory and practice, engage the public, and convene networks to build public and political will for environmental solutions

GOAL 6: Inspire new interdisciplinary scholarship and teaching to address emerging environmental issues

- Awarded grant funding from the newly created Leitner Awards for Uncommon Environmental Collaboration, which promotes environmental research between F&ES faculty and other scientists across the Yale campus

The two F&ES-led teams that received Leitner Awards include partners from the School of Engineering & Applied Science, the Department of Computer Science, and the School of Public Health.



The Yale Center for Environmental Communication, led by Anthony Leiserowitz, F&ES senior research scientist, will leverage existing strengths in research and public engagement to establish F&ES as a leader in environmental communication theory and practice.

GOAL 7: Enhance the spirit of community within the School and maintain partnerships campus-wide, nationally, and globally

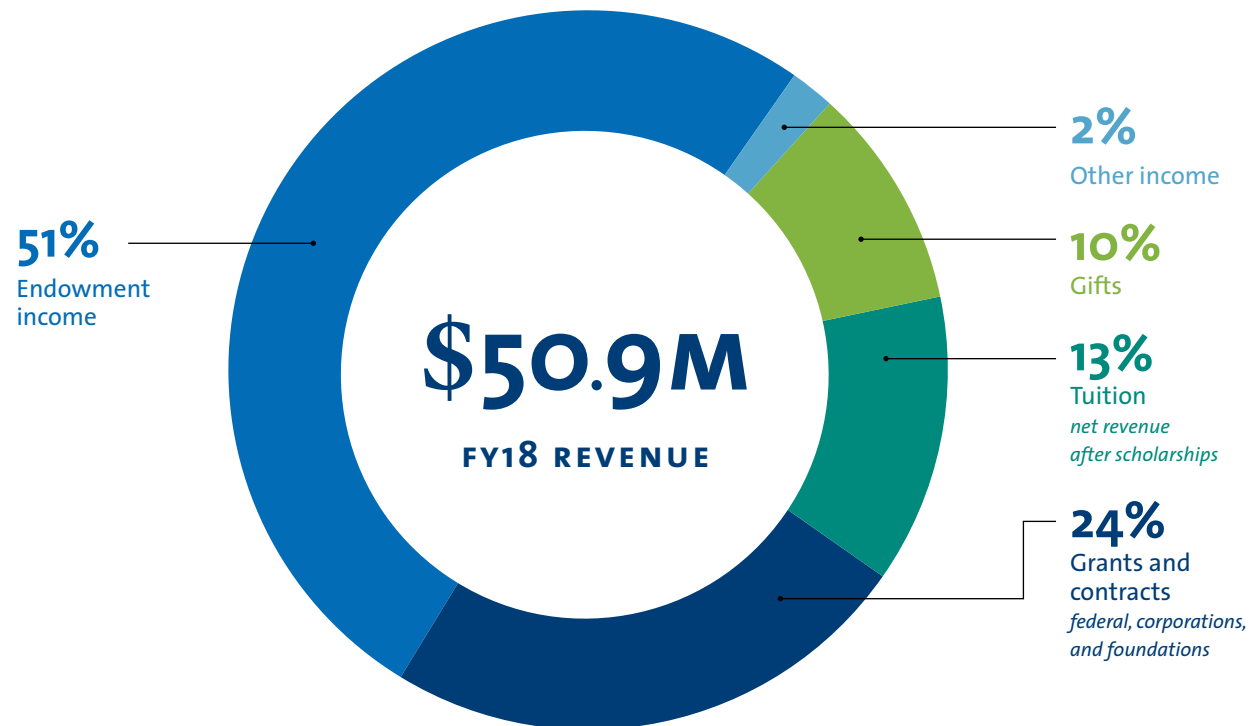
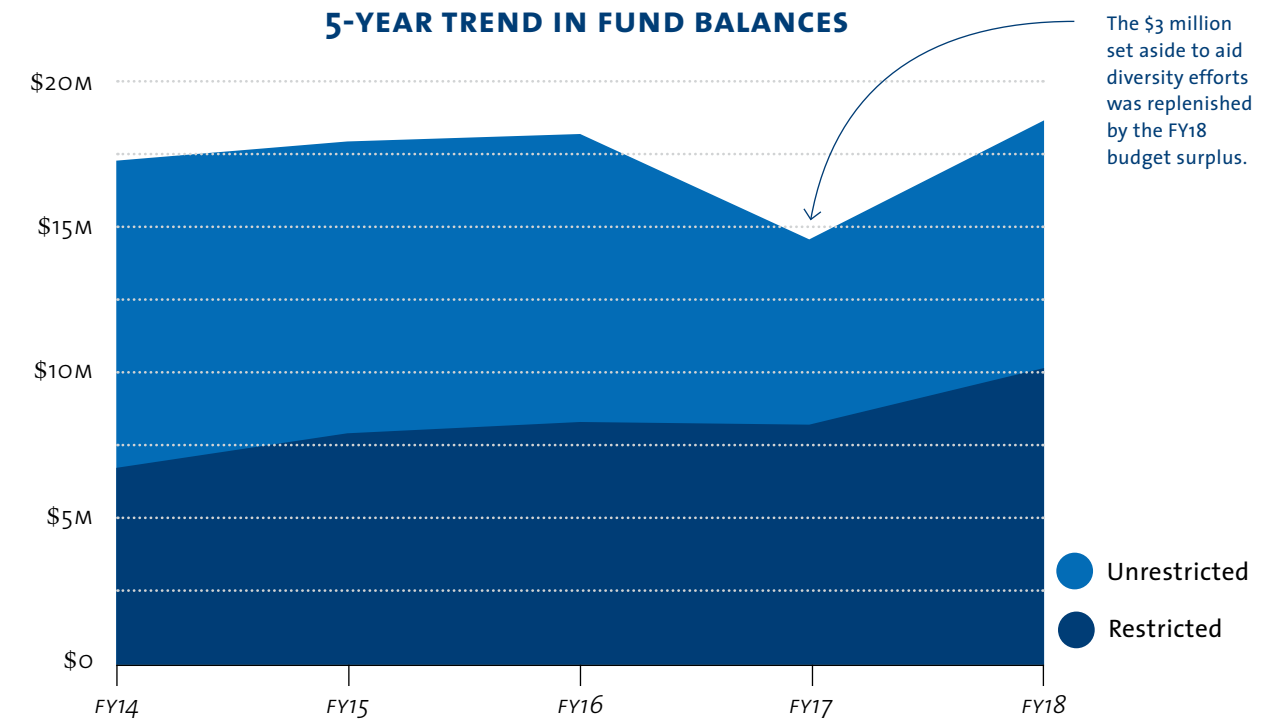
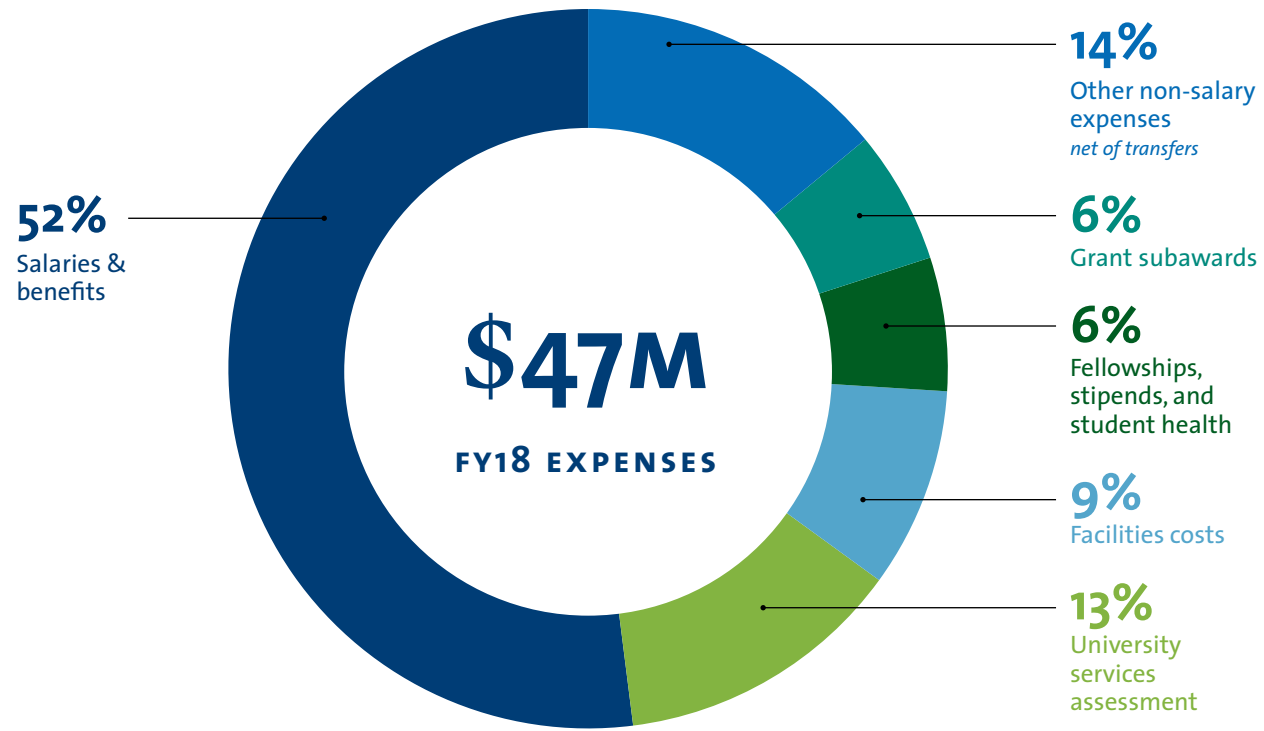
- Created seed funding for sustainability efforts exploring pedagogical and applied resources for faculty research, student initiatives, and staff engagement
- Cultivate new cross-campus partnerships with other Yale departments and professional schools — including the Yale School of Architecture, the Yale School of Public Health, the Yale School of Management, and the Yale Center for Science and Social Science Information — for new F&ES-led initiatives

GOAL 8: Create reliable resources, including funding and space, to support existing and new work in our growing programs

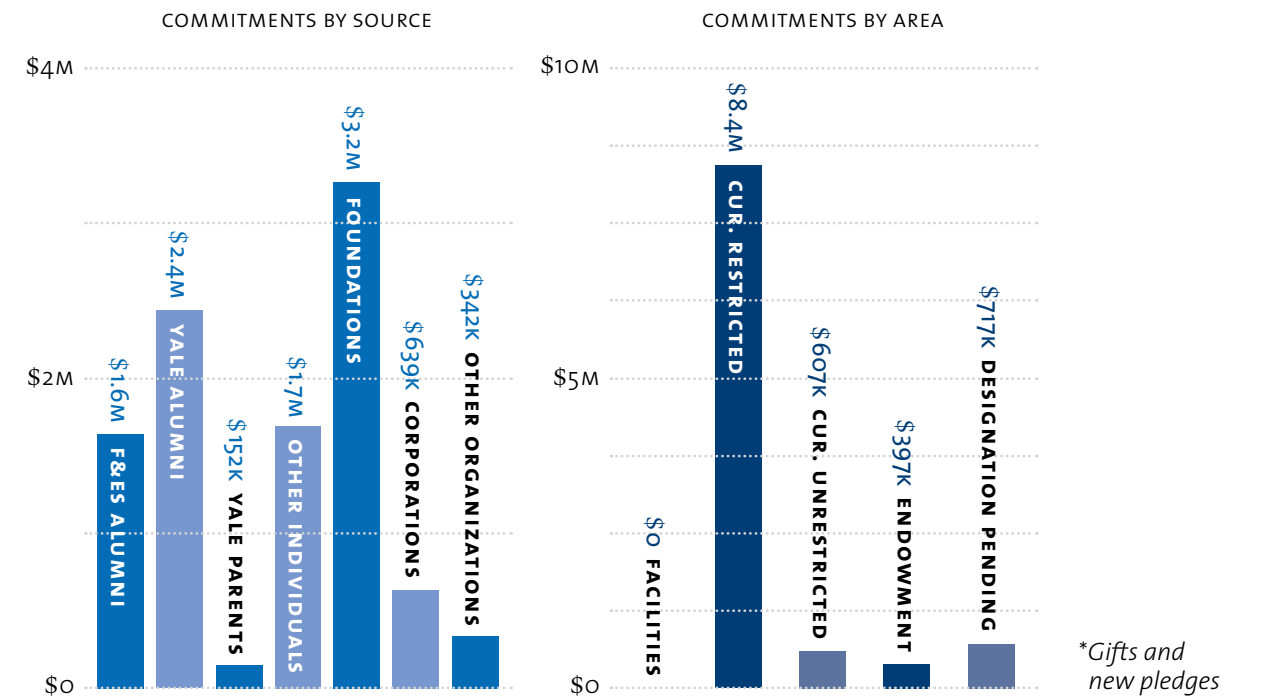
- Introduced the Environmental Progress Fund to kick-start new projects and programs that advance strategic interests, including environmental communications, equity and diversity, environmental justice, and interdisciplinary and collaborative science and research
- Secure steady support for the School's existing areas of strength, including student scholarship and internship funds, and centers and programs
- Develop new fundraising proposals for communicating science to audiences across political platforms, expanding environmental perspectives, and sustaining environmental science and scholarship in the face of public challenges

Marlyse Duguid '10 M.F., '16 Ph.D., the first Thomas G. Siccama Lecturer in Environmental Field Studies, teaches field-based courses and leads a summer field ecology program for undergraduate and graduate students.





FY18 COMMITMENTS* = \$10,143,710



Gifts to F&ES create a foundation upon which our entire school is built.

Because of your generosity, our faculty can conduct groundbreaking research, our students can take advantage of life-altering internships, and our alumni can pursue careers that provide solutions to the world's most pressing environmental challenges. We can continue to bolster our historic strength in research and education, while building an ambitious and innovative path to a sustainable future. Each dollar makes a difference.

Help us continue the momentum created by an incredible year of successes — made possible through gifts from alumni and friends — by donating to F&ES today. Go to environment.yale.edu/giving or use the attached envelope to make your gift!

Contact the Office of Development and Alumni Services at 203-432-9958 or email fes.dev.alumni@yale.edu

THE POWER *of the*
F&ES ANNUAL FUND

IN FY18, THE F&ES ANNUAL FUND COLLECTED

1,206

GIFTS THAT WERE IMMEDIATELY SPENDABLE,
TOTALING

\$357,816

EQUAL TO THE ANNUAL YIELD OF AN
ENDOWMENT OF

\$7,200,000

WITHOUT HAVING TO RAISE \$7.2 MILLION



28% of all alumni made a gift in FY18. Using last year's averages, if all alumni made a gift, F&ES could have raised over \$1.25 million.



Investments of time, energy, and counsel make a big difference.

The alumni and friends who volunteer on our boards play a critical role in shaping the Yale School of Forestry & Environmental Studies for future generations, and set an inspiring example for members of the F&ES community.

We thank all of them for their service and commitment to our School.

F&ES Alumni Association Board

Elected/Appointed Members:

James Albis* '16 M.E.M.
 Saleem H. Ali '96 M.E.S.
 Gary Barrett '96 M.F.
 Jaime Carlson* '09 M.E.M./M.B.A.
 David Ellum '01 M.F., '07 Ph.D.
 Sue Ely '07 M.E.Sc.
 Alex J. Finkral '97 M.F., '05 Ph.D.
 Cassie Flynn '07 M.E.M.
 Cilla Kellert '74 B.A., '81 M.F.S.
 Jessica Leung '17 M.E.M.
 Joe MacDougald* '05 M.E.M.
 Cathy McConnell '85 M.F.S.
 Hallie Metzger '65 M.A.T., '75 M.F.S.
 Tara Meyer* '15 M.E.Sc.
 Luisa Lema Velez '06 M.E.M.
 Maclovía Quintana '11 B.A., '14 M.E.Sc.
 Sara Smiley Smith '07 M.E.Sc./M.P.H., '16 Ph.D.
 Jane E. S. Sokolow* '80 M.F.S.
 Whitney Tilt '85 M.E.S.

Student Representatives:

Ben Christensen '20 M.E.M. (Expected)
 Yufang Gao '14 M.E.Sc., Ph.D. Candidate

Ex-Officio Members:

Dr. Indy Burke
Carl W. Knobloch, Jr. Dean
 Kristin Floyd '01 B.A.
Director of Development & Alumni Services

Faculty Representatives:

Mark Ashton '85 M.F., '90 Ph.D.
 John Wargo '81 Ph.D.

International Alumni Association Board Liaison:

Uromi Goodale '01 M.F.S., '09 Ph.D.

Honorary Lifetime Member:

Herbert I. Winer '42 B.A., '49 M.F., '56 Ph.D.

F&ES Leadership Council

Calvert J. Armbrrecht
 Edward C. Armbrrecht, Jr. '54 B.A.
 Susan M. Babcock '83 M.E.S.
 Edward P. Bass '67 B.S.
 Spencer B. Beebe '74 M.F.S.
 Frances Beinecke '71 B.A., '74 M.F.S.
 Forrest C. Berkley '76 B.A.
 Peter A. Bradford, Esq. '64 B.A., '68 LL.B.
 Mark A. Broach '83 B.A.
 Barbara Brown, Ph.D.
 Christina L. Brown
 Coleman P. Burke '63 B.A.
 Josephine Bush
 Donald T. Chen* '89 B.A., '92 M.E.S.
 Starling W. Childs, II*** '76 B.S., '80 M.F.S.
 Brandi A. Colander* '07 M.E.M.
 Peter B. Cooper, Esq. '60 B.A., '64 LL.B., '65 M.U.S.
 Lewis B. Cullman '41 B.A.
 Christopher A. di Bonaventura '77 B.A.
 Ellen N. di Bonaventura
 Ceara G. Donnelley, Esq. '04 B.A., '09 J.D.
 Vivian E. Donnelley
 John E. Earhart '85 M.F.
 Christopher J. Elliman* '75 B.A.
 William B. Ellis
 Thomas K. Emmons '69 B.A.
 Frederick V. Ernst '60 B.A.
 Howell L. Ferguson '66 B.A.

George T. Frampton, Jr. '65 B.A.
 Timothy Clarke Fritzingler '93 B.A., '99 M.F., '99 M.B.A.
 Victor L. Gonzalez '77 M.F.S.
 Gerald Grinstein '54 B.A.
 Evan Griswold '75 M.F.S.
 Leah K. Hair* '74 M.F.S.
 Rose H. Harvey '84 M.E.S.
 André T. Heinz '99 M.E.S.
 Adelaide Hixon
 Dylan H. Hixon '88 B.S.
 Sherry Huber
 Redmond S. Ingalls '98 B.A.
 J. Heinrich Jessen* '95 M.E.M.
 Jesse D. Johnson '01 M.E.M., '01 M.B.A.
 M. Albin Jubitz, Jr. '66 B.S.
 Yolanda Kakabadse
 Randall M. Katz '79 B.A.
 Martin Kaplan
 Scott M. Kline '85 B.A.
 Pamela Kohlberg* '75 B.A., '77 M.F.S.
 Richard E. Kroon '64 B.A.
 Frederic D. Krupp '75 B.S.
 James Leitner* '75 B.A.
 Robert Liberman '65 B.A.
 Thomas E. Lovejoy '64 B.S., '71 Ph.D.
 Claudia Martinez-Zuleta '89 M.E.S., '89 M.A.
 Donald F. McCluskey '42 B.E., '59 M.Eng.
 Alan R. McFarland, Esq. '64 B.A., '67 LL.B.

Thomas McHenry** '77 B.A., '80 M.F.S.
 Roger D. Mellem, Esq. '80 M.S.L.
 Preston J. Miller '71 B.A.
 Mary Moran**
 Caroline P. Niemczyk '77 B.A.
 Marne Obernauer, Jr. '65 B.A.
 Gilman Ordway '47 B.A.
 Dan Perlman '80 B.A.
 William K. Reilly* '62 B.A.
 Jonathan F. P. Rose '74 B.A.
 Heather L. Ross
 Andrew E. Sabin
 V. Alaric Sample '80 M.F., '88 M.B.A., '89 D.For.
 Christopher G. Sawyer '75 M.Div.
 Ralph C. Schmidt '69 B.A., '78 M.F.S.
 Peter A. Seligmann '74 M.F.S.
 Martin L. Senzel '66 B.A., '69 LL.B.
 David A. Sobotka* '78 B.A.
 G. Wade Staniar '64 M.F.
 Edward L. Strohbehn, Jr., Esq. '62 B.A., '63 B.E., '66 M.A., '69 LL.B.
 Ellen Susman
 Stephen D. Susman '62 B.A.
 Dorceta E. Taylor '85 M.F.S., '91 Ph.D.
 Oakleigh Thorne II '51 B.S., '53 M.S.
 Joan L. Tweedy
 Frederick J. Weyerhaeuser '77 B.S., '83 M.F.S.
 Joseph H. Williams '56 B.A.
 Adam R. Wolfensohn '02 M.E.M.

Troy R. Savage
Dustin S. Schinn
Courtney G. Seltzer
Mona Wang
Lisa C. Weber

2014

Anonymous
Brian Ambrette
Laura A. Bakkensen
Sarah R. Barbo
Matthew C. Bare
Dominique Z. Bikaba
Colin M. Donihue
Bryan J. Eckstein
Laura G.

Franceschini

Yufang Gao
Caroline B. Goodbody
Emily M. Greenlee
William N. Miao
Jennifer M.
Milikowsky
Robert E. Orvis
Maclovía Quintana
Erin M. Schnettler
Maximilian N.
Tattenbach
Karen A.
Tuddenham
Noah W. Walker
Timothy J. White

2015

Katherine M. Beechem
Uma N. Bhandaram
Colin R. Brown
Michaelle E. Camp
Yaping Cheng
Lindsay T. Crum
Sarah O. Cullinan
Stephen J. Fain
Marissa Galiza
Rebecca E. Gallagher

Emily S. Grady

Dawn Henning

Linda K. Holcombe
Corey S. Johnson
Anthony M. Mecum
Tara K. Meyer
Hyacinthe Nare
Clara W. Rowe
Jeffrey R. Smith
John R. Withall

2016

Anonymous (2)
Bryan Early
Eitan H. Hochster
Michael R. Johnson

Sumit A. Kadakia
Grace Kankindi
Meaghan R. McGrath
Nicholas C. Olson
Lindsey A. Ratcliff
Lawrence B.
Rodman
Latha Swamy
Sabrina H. Szeto
Elliott H. Vander Kolk
Stefanie Wnuck
Tom Yang

2017

Ethan Addicott
Vinay K. Ananthachar
Taylor Ganz

Samantha Garvin

Milagros De Camps
German

Juliana R. Hanle
Connor Hogan

Heidi Hurd

Grace Lange

Jessica Leung

Zoe C. Lloyd

Andre Bobek Lopes
Rachel Lowenthal

Jared MacLane

Kira McCall

Jordan T. Moore

Caroline Muraida

Lucyann Murray

Erik Ndayishimiye

Philip B. Picotte

Abhilasha Purwar

Ann Robertson

Sara Schwartz

Ben Serrurier

Yi Shi

Preeth
Srinivasaraghavan

Farrukh Zaman

2018

Anonymous (16)
Ellen B. Abramowitz
Caroline Acheatel
Beryl A. Ajwang’
Judy M. Amsalem
Kwasi K. Ansu
Annie H. Arbuthnot
Maggie Barnes
Andrew S. Beck
Nicholas C. Biemiller
Lauren E. Boucher
Benjamin J. Bovarnick
Eve D. Boyce
Jolisa Brooks

Corey Creedon
Kevin C. Dahms
Mark K. DeSantis
Emily C. Dolhansky
Cara J. Donovan
Adam Y. Eichenwald
Adam E. Fishman
Parfait Gasana
Rachelle Graham
Andrew G. Greaves
Laura E. Green
Maria Esther Guevera
Annie Guo
Camilo J. Huneeus
Guzman
Gregory M. Haber
Jacqueline E. Hall
Caroline E. Hobbs
Jeremy J. Hunt
Tasneem A. Islam
Sophie Elizabeth Mary
Janaskie
Sidney J. M. Jules
Lucy Kessler
Carlie C. Kierstead
Yookyung Kim
Kelly E. Kneeland
Swetha Kolluri
Brian H. Lee
Yishen Li
Rebecca L. Loomis
Laurel Low
Yasha A. Magarik
Samantha M. Maher
Catherine I. Martini
Holly McLaughlin
Brenda C. Meany
Lydia A. Mendoza
Ethan F. Miller
Matthew S. Moroney
Viveca Wynne
Stackig Morris
Rohini Mukherjee
Katherine B. Murray
Elizabeth M. Naro
Monica A. Nunez
Sanna K.
O’Connor-Moberg
Oscar Crespo Pinillos
Hannah L. Peragine
Thuy T. Phung
Valerie M. Pinkerton
Krisztina Pjeczka
Serena Pozza
Jacob B. Reznick
Isabelle Y. Riu
Daniela Rossi
Caroline N. Scanlan

Laura E. Small
James D. Souder
Natalie R. Spiegel
John N. Stoner
Jessica G. Swindon
Eli Z. Terris
Brittany A. Thomas
Alexandra E. Vecchio
Adam S. Walker
Samuel D. Wall
Elisabeth B. Ward
Rachel L. Weston
Jessica Wilke
Lindsay J. Wilson
Katherine R. Wolf
Nathalie C. Woolworth
Weiyang Zhao

Current Students

Anonymous (3)
Sandeep Aysola
Meredith L. Brown
Gioia M. Connell
Shannon M. Dulaney
Kelechi Eleanya
Nina P. Hatch
Franz J. Hochstrasser
Sabrina Korman
Chris Lewis
Christopher A.
Martin
Brunilda Pizarro
Laura Tamjarv
Perk Han Eugene Tan
Ziyun Ye
Yuhan Zhang
Santiago Zindel

Friends

Anonymous (5)
Leland J. Adams
Somaya Ahmed
Richard Amerling
Jason Anthony
Robert A. Archer
Edward C. Armbrecht
Christina Aston
Timothy Averill
Nancy G. Baker
Elizabeth Barratt-Brown
Thomas A. Barron
Edmund Bartlett
Robert E. Baker
George S. Bass
Tracey Becker
Elizabeth G. Beinecke
Karen Berger
James Bergman
Jabe Blumenthal
Chris Bolgiano
Lynne Bonnett
J. Alan Brewster
Linda K. Broker
G. W. Brown
Martin S. Brown
Coleman P. Burke
Ingrid C. Burke
John W. Byrd
Samuel S. Caldwell
William Cannon
Jennifer J. Chan
Larry G. Chang
Christina H. Coffin
John E. Cogan
Catherine Cole
Peter B. Cooper
Brian Crucey
Louis J. Cuoco
Sandra Cuoco
Derrick Curry
Dorothy Cutting
Lisa Dahill
Thomas F. Darden
Melanie Davies
Erin E. Deemer
Christopher A. di
Bonaventura
Eric Dillon
Holly Dillon
Michael Disabato
David Doll
Vivian Donnelley
Robert D. Dubrow
Elisabeth C. Dudley
Daniel C. Edelson

Christopher J. Elliman
Dan Emmett
Thomas K. Emmons
Frederick V. Ernst
Daniel C. Esty
Lee H. Farnham
Howell L. Ferguson
Karen Ficorilli
John S. Fitch
Gerard Fitzgerald
Dan Fleet
Kristin L. Floyd
Daniel Fogelson
Paul Fournier
Andrew J. Friedland
Vincent Frisina
John G. Fritzingier
Stefano F. Frota
Nina Garrett
Gilbert M. Gaul
Murray Gell-Mann
Bradford S. Gentry
Eugenie I. Gentry
Christopher Getman
Julia Getzels
Ballie Gifford
John R. Gilleland
James Goodkind
Roberta G. Gordon
Kate Gould
Rob Gould
Thomas E. Graedel
Marc Grant
Jill Greany
Jude Grey
John Grim
Christopher Hall
Ann Hallowell
Bryan M. Haltermann
Marshall Hamilton
Sibyl Harwood
Paul Hayes
Robert Hayes
Frank O.A. Heintz
George L. Helmholz
Ben G. Henneke
Marquita Hill
Dylan H. Hixon
Roc Hodges
Charles Howie
Jacqueline Collins Hullar
John P. Hullar
C. Powell Hutton
Frans Ijserinkhuijsen
Redmond S. Ingalls
Lori Jain
Sudhanshu Jain

Michael Jensen Sembos
Ellen Jewett
David A. Jones
M. Albin Jubitz
Betty A. Kahn
Stephen D. Kahn
Christopher Kaneb
Randall M. Katz
Richard L. Kaufmann
Nancy Klavans
Peter L. Knuepfer
Stefan Knust
Leonard Kolstad
William C. Kunkler
William W. Kunze
Ayako O. Kurihara
Charlene J. Kurihara
Deborah Lagrasso
Liza Lagunoff
Joanne V. Landau
Joyce E. Laudise
Dee Lawrence
Richard H. Lawrence
Matthew J. LeBlanc
Sabrina R. LeBlanc
Dix Leeson
James Leitner
Charlton M. Lewis
Robert Liberman
Lawrence H. Linden
Silas Little
Shaoda Liu
Henry Lord
David P. Loseff
John McCall MacBain
Allison R. Mace
Whitney MacMillan
Carl L. Malm
John Marquis
Christopher Martens
James Martin-Schramm
Melissa F. Mason
Barry Matt
Mary McAllister
Margaret K. McCarthy
Kevin A. McClean
Meghan R. McMahon
Subhash Mehta
Josephine A. Merck
Vicky Meretsky
Benjamin Messer
Franklin B. Miles
Vera Miller
Arthur N. Milliken
George G. Montgomery
Mary P. Moran
Christopher Maroney
David B. Moyer

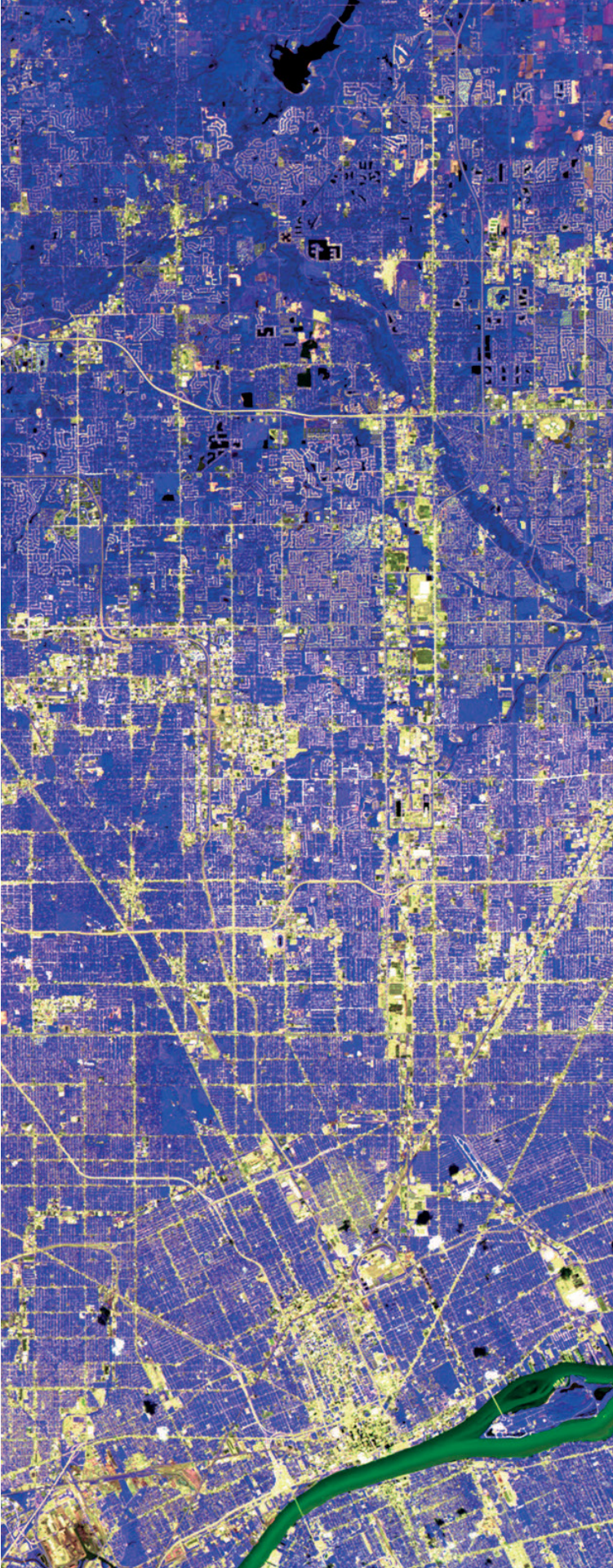
Christopher Murray
Junko Nakai
Albert P. Neilson
Chris Nielson
Hilary A. Noonan
Carter O’Brien
Donald A. Offinger
Andrew Ogden
Frank T. O’Keefe
David Olson
Gilman Ordway
Stanton C. Otis
Jon Ozaksut
Alfred Padula
Gregory Palermo
Frederick W. Pape
Vicente S. Perez
Dan L. Perlman
Elliot R. Peters
Michael Phillippp
Veronique C. Pittman
Karen Polk
Michael Pontti
Sarah Pope
Alexander H.K. Posner
Wendy Pratt
Kenneth M. Raisler
Edward R. Ranney
Elizabeth Reece
William K. Reilly
Paul Reimer
David Richardson
Rosemary L. Ripley
James B. Rogers
Jonathan F.P. Rose
David N. Rosen
Heather L. Ross
Marshall S. Ruben
Lyn Ruble
Daniel W. Rupp
Andrew E. Sabin
David T. Schiff
Robert J. Schloss
Melvyn Schnell
Fiona P. Schwab
Stephen H. Scolnik
Mary Sealing
Margaret J. Segal
Helen Seidler
Martin L. Senzel
Karen Seto
George Putnam Smith
Nicholas D. Snow
Eric Snyder
Donna Solebello
William Southworth
J. Gustave Speth
Steven Sprauer
Alice Stanback

Fred Stanback
Thomas F. Steyer
K. Lowell Strine
Edward L. Strohbehn
David Swensen
Dean J. Takahashi
Leigh Talmage-Perez
Mark Thain
Annette Thomas
Pamela Thompson
David H. Thorne
Rosalind Troupin
Amy Vedder
Kenneth P. Vickery
Rodney B. Wagner
Philip Warburg
William D. Waxter
Larry Weaner
James S. Welch
Marianne Welch
Stephanie Weyer
Frederick T.
Weyerhaeuser
Scott L. Wing
Timothy Wirth
Lyndel J. Wishcamper
Cindy M. Wojdyla
Aimee B. Wolfson
Bill Yeates
Nancy Zimmerman

Corporations, Foundations, and Organizations
Anonymous
11th Hour Project
Aegon Netherlands
B Shivery
Bay & Paul Foundations
Blue Ivy Ventures
BlueSky Investment Management LLC
Brown Advisory
The Brown-Forman Corporation
Calvert Asset Management Co.
Campus Compact
ClimateWorks Foundation
Cohen Family Gifting Fund
Coimbra Sirica
The Community Foundation for Greater New Haven
Connecticut Green Bank
Cypress Creek Holdings LLC
Dalio Foundation, Inc.
Doris Duke Charitable Foundation
Edna Bailey Sussman Foundation
The Endeavor Foundation
Energy Foundation
Environmental Defense Fund
Environmental Research & Education Fund
Fibria Celulose
Forestal Minico
The Foundation – Dallas County Community College District
The Frederick & Margaret L. Weyerhaeuser Foundation
Gabelli Asset Management Co.
Gordon and Betty Moore Foundation
Heising-Simons Foundation
Impax Asset Management

International Bank for Reconstruction and Redevelopment
International Union for the Conservation of Nature
The Kimberly Clark Foundation, Inc.
Klabin
Land Trust Alliance
Lexis-Nexis
The John D. & Catherine T. MacArthur Foundation
Maine Community Foundation
Mason Trust Fund
Mirova
Miondi Services UK Limited
MSCI, Inc.
The Nature Conservancy
Net Power
New York State Energy Research and Development Authority
The Nickel Institute
Noble Research Institute, LLC
NPV LLC
Ns Reizigers B.V.
Oak Spring Garden Foundation
Olam Europe
The Stephen Della Pietra & Pamela Hurst-Della Pietra Family Foundation
Pratt & Whitney
Praxair, Inc.
Rainforest Alliance
Richmond Global Fund Management
Saturna Capital
Skoll Global Threats Fund
Society for Conservation Biology
Soil Health Institute
Soltag
State of CT
Department of Environmental Protection

Suderland Fund of the New Hampshire Charitable Foundation
Susanna Wesley School
Sustainable Insight
Capital Management
Terra Alpha Investments
TomKat Foundation
Treepeople
The Emily Hall
Tremaine Foundation
Turkish Ministry of Forestry and Water Affairs
UBS Switzerland
United Technologies Corporation
Vanguard Investment Management
Fintech Strategies
Virgin Management
Walton Family Foundation
Waste Management, Inc.
William Penn Foundation
World Business Council
World Resources Institute
Wyman Family Fund of the New Hampshire Charitable Foundation
Wyss Foundation
Yale Club of New Haven



**Yale SCHOOL OF FORESTRY &
ENVIRONMENTAL STUDIES**

195 Prospect Street
New Haven, CT 06511
environment@yale.edu
203-432-5100
fesdeansoffice@yale.edu

Non Profit Org.
U.S. Postage
PAID
New Haven, CT
Permit No. 526

[Recipient name]

[Address line 1]

[Address line 2]

[Address line 3]